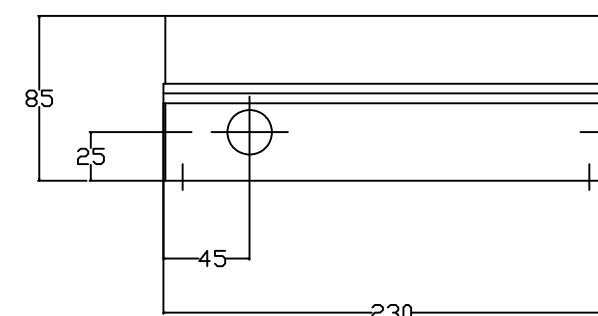
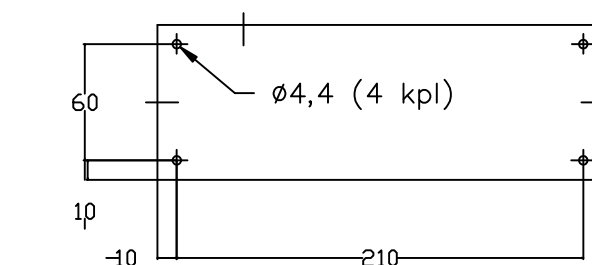


TW77011

Fluorecent tube: TW77011: 11-65W

L = phase before the switch
 L1 = pahse after the switch
 L and L1 have to be same phase
 As maintained, L and L1 are connected

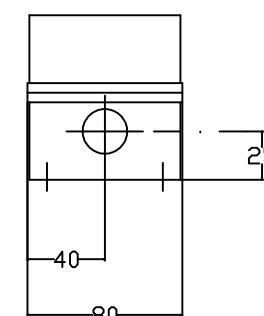
COPYING OF THIS DOCUMENT AND GIVING IT TO OTHERS AND THE USE OR COMMUNICATION OF THE CONTENTS THEREOF ARE FORBIDDEN WITHOUT EXPRESS AUTHORITY. OFFENDERS ARE LIABLE TO THE PAYMENT OF DAMAGES. ALL RIGHTS ARE RESERVED IN THE EVENT OF THE GRANT OF A PATENT OR THE REGISTRATION OF A MODEL OR DESIGN.



Measurements TW77011

Max. cable lenght between the luminaire and the emergency lighting unit is 1m.

CLASSIFICATION IP67



TEKNOWARE
 T R A F O - G R O U P

TW77011
 Electronic ballast
 One tube

Date	By	Check.	App.	Rev.	SCALE	Drawn	Date	Name
29.07.09	MKo			B			09.01.03	PHO
				C		Check.		
				D	(A3)	App.		
				E	Old no.	New no.		
				F	DRAWING NO.			Rev. Sheet
				G	3E77043			2/2
				H				